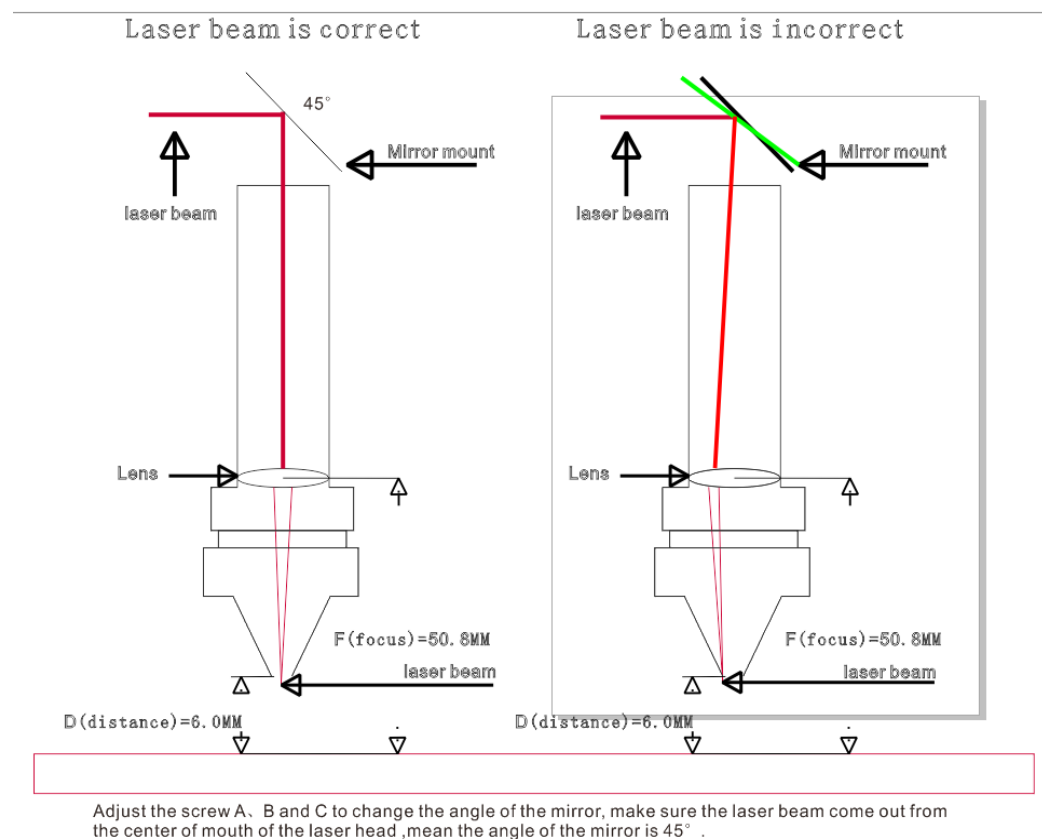


"screw A" , Rotate it to right, the laser beam moves to left side ; Rotate it to left, the laser beam moves to right side

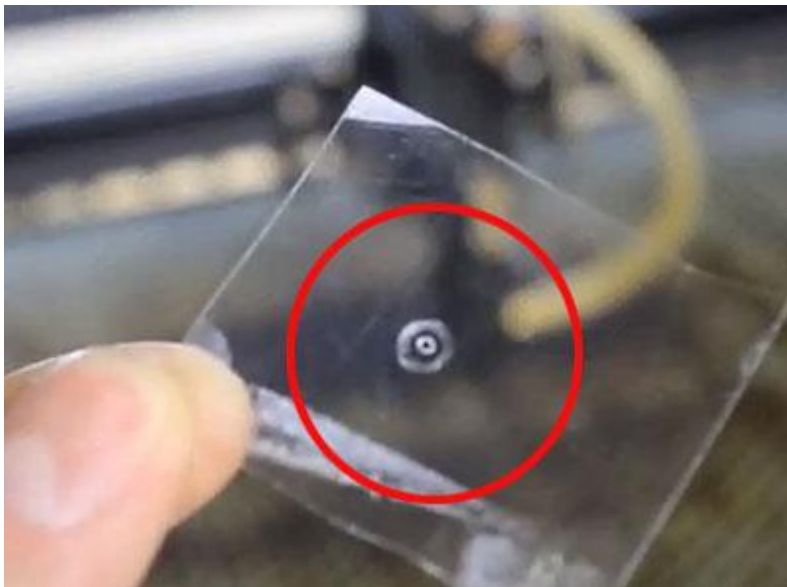
"screw B" , Rotate it to right, the laser beam moves forward ; Rotate it to left, the laser beam moves backward

"screw C" , Rotate it to right, the laser beam moves to the right forward direction ; Rotate it to left, the laser beam moves left backward direction

Step 1:

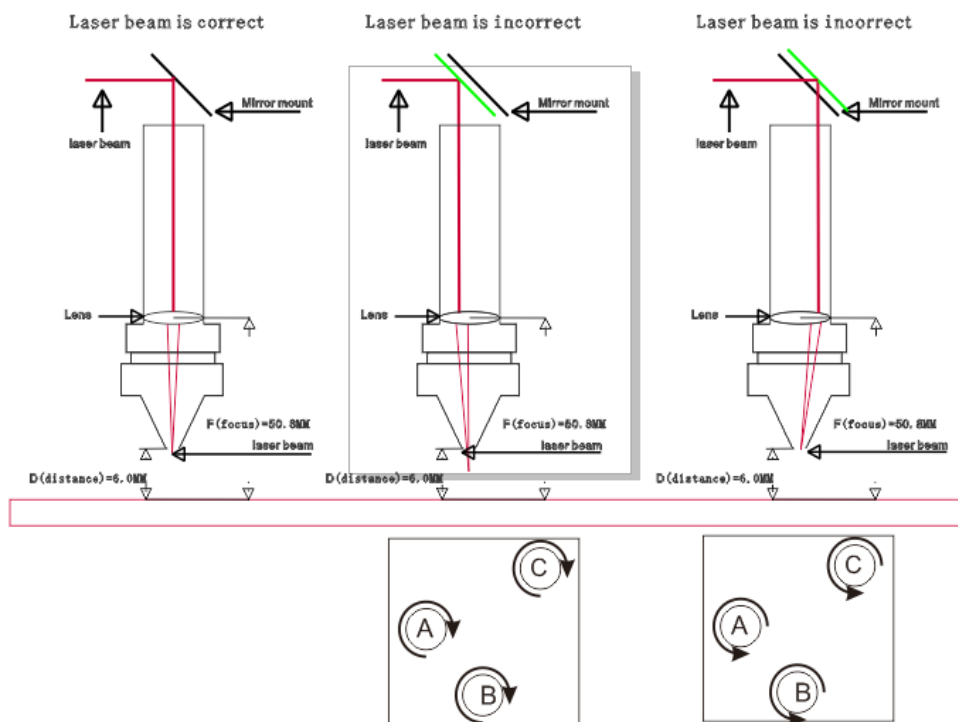
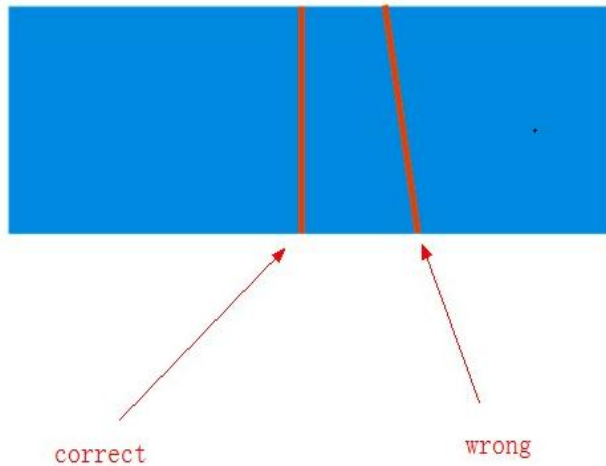


the laser beam come out from the center of mouth of the laser head as below picture shown.



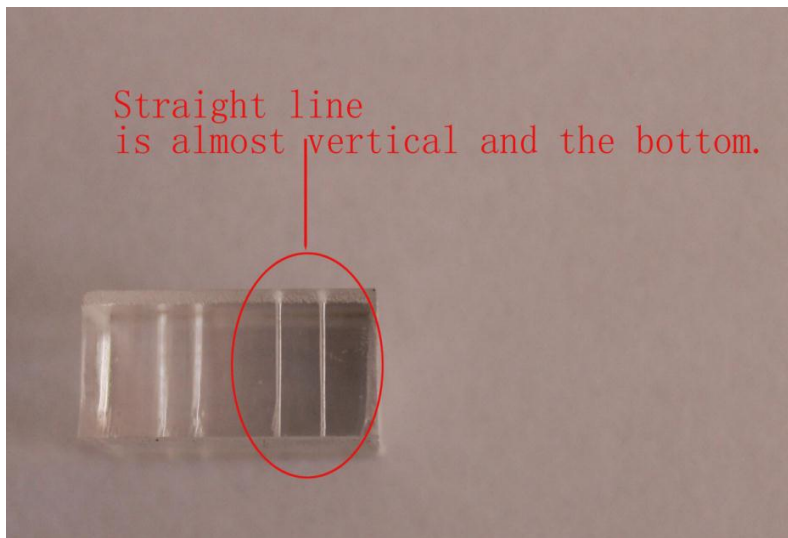
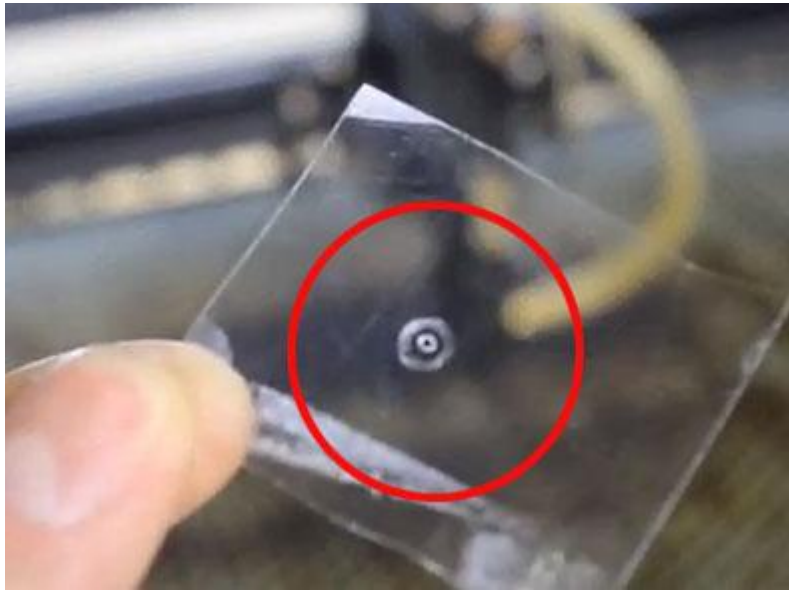
Step 2:

Hit a line to 10mm acrylic,
check if the line is vertical or not.



Rotate all the fine tune screws, let the laser beam parallel to the center of the focus lens.
Before hit a line to 10mm acrylic, please go back to Step 1 to check if the laser beam is come out from the center of the mouth.

Repeat the Step 1 and Step 2 until you get the result likes below.



Finally, hit four line of four corner if they are all straight line.