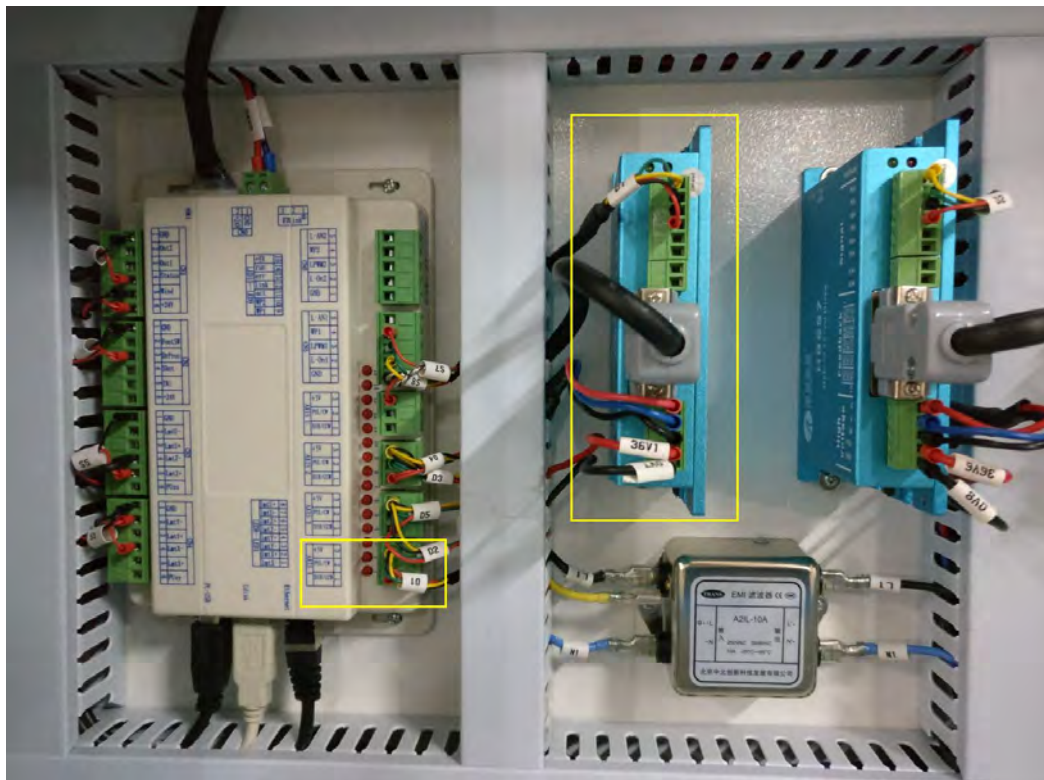
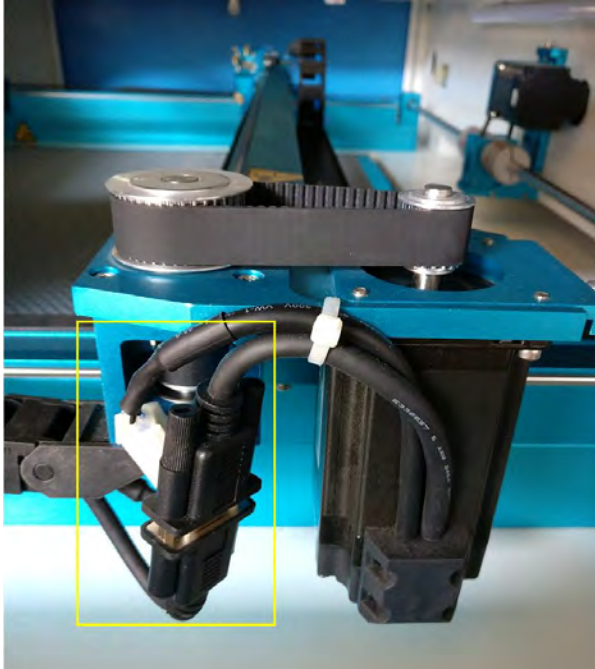


Why X axis won't move?

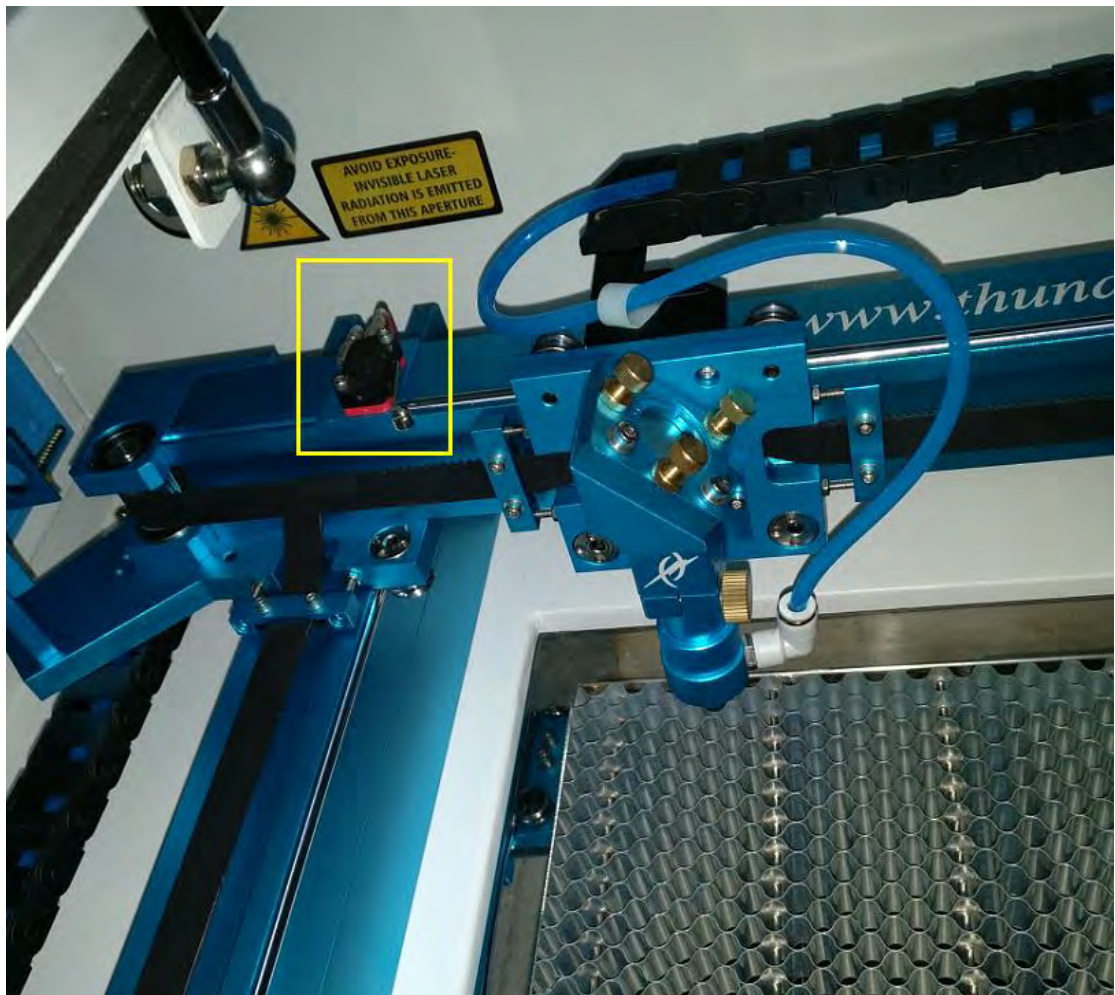
This problem is probably caused by one of three conditions:

- 1.The connector for X motor is bad.
- 2.Wrong signal from X limit switch. (most likely)
- 3.Defects of the motor or driver.

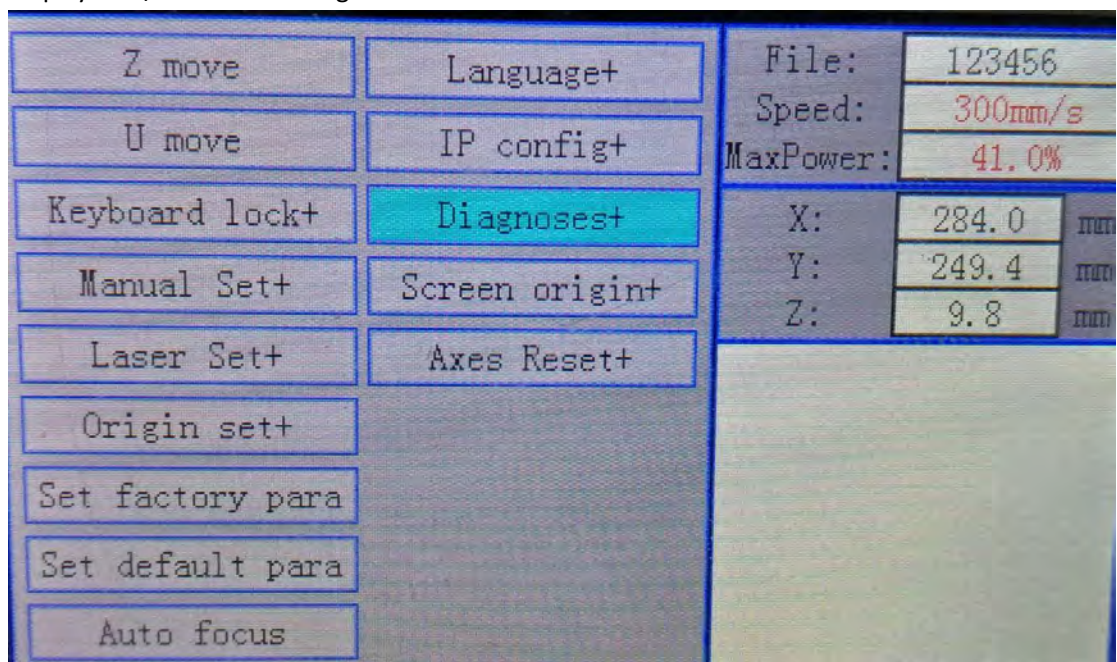
1. Check the connector as following:



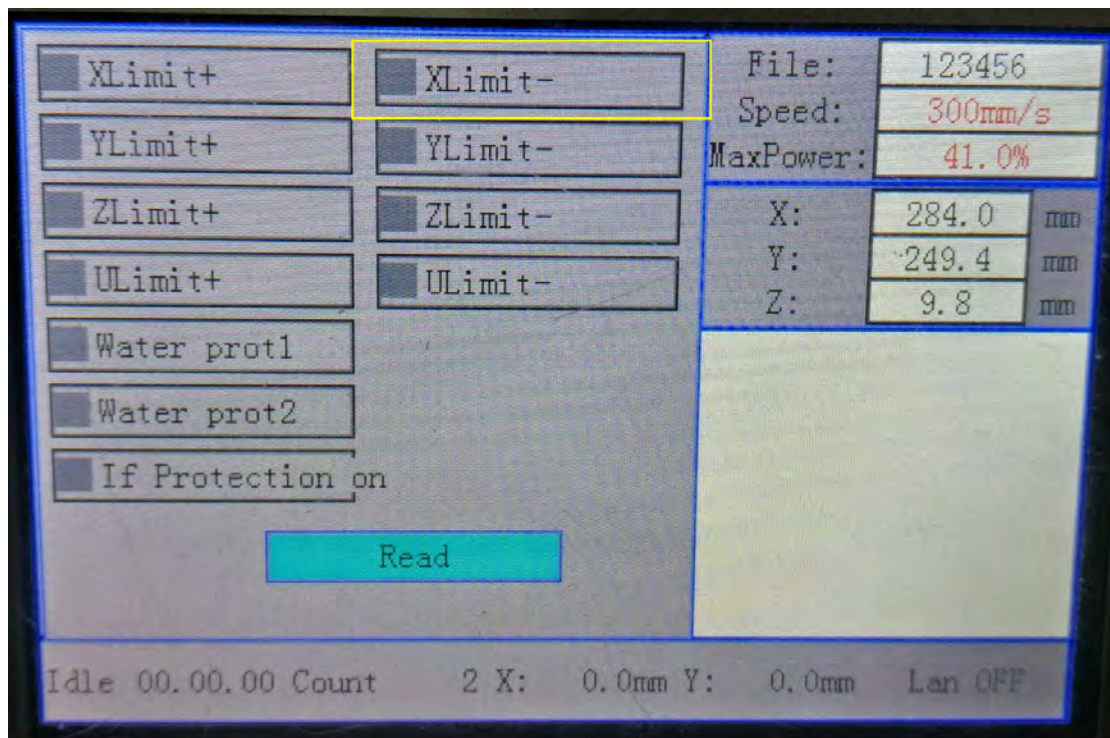
2. Wrong signal from X limit switch.(most likely)



Display→ Z/U button→ Diagnoses+



Then check the state of the X limit switch.



Red: X limit switch is on.

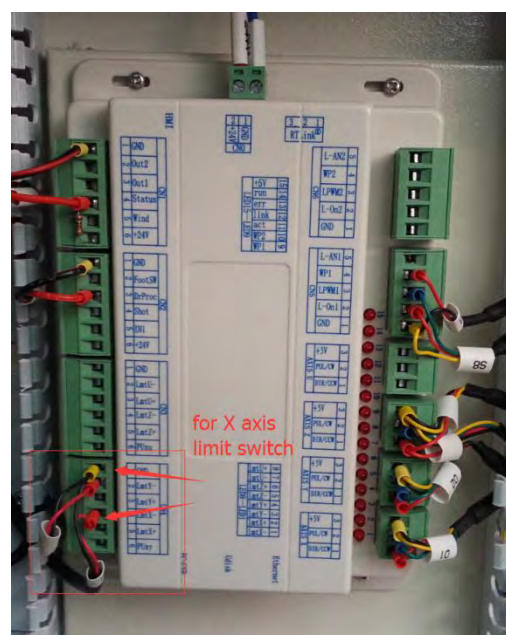
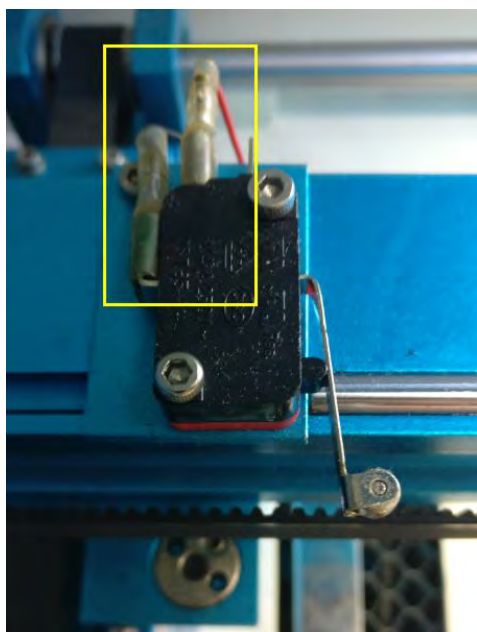
Grey: X limit switch is off.

Test if the X limit switch is working well or not.

- ①press the X-axis limit switch;
- ②leave the X-axis limit switch.

If the XLimit- always show Red so X axis won't move.

PS: The switch is hardly bad, you find a new one from toolbox for replacement. The problem generally happen with the signal wire for switch(replace a new wire to test).



3.Driver or motor

Swap the connector of the driver to test which part doesn't works.

